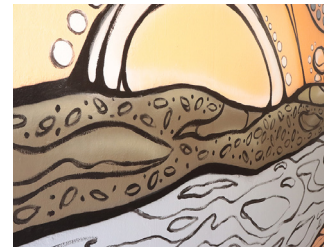


Community and First Nations People | Como Station Upgrade

The Como Station upgrade focused on community and First Nations engagement. Degnan worked closely with the Kurranulla Aboriginal Corporation, leading to the creation of a mural by Indigenous artist Merindah Funnel. The project also included consultations with the St George Sutherland Community College to ensure accessibility improvements reflected community needs



The Como Station upgrade, part of the TfNSW Transport Accessibility Program, included installing two lifts, building an underpass with Indigenous artwork, regrading the car park, and relocating accessible spaces. Additional improvements enhanced lighting, electrical systems, drainage, and communications, making the station more accessible for all.

Celebrating Indigenous Heritage

Situated on Dharawal Country, Como Station's upgrade embraced local cultural significance. Degnan engaged with the Kurranulla Aboriginal Corporation to better understand the land's history. With guidance from Auntie Deanna Schreiber, Indigenous artist Merindah Funnel created a mural celebrating the local landscape, including mangroves and ancient sandstone. The artwork, painted in the underpass, welcomes commuters while honouring the traditional custodians and connecting with the land.

Building with the Community

The project was developed not only for the community but with the

community. Degnan's engagement with the St George Sutherland Community College (SCSCC) focused on improving accessibility for people with limited mobility. Through consultation, Degnan incorporated ideas such as larger lift buttons for easier access. The partnership continued during construction, with workshops where SCSCC clients built planter boxes for the station platform. A pop-up café, 'Little Italy', also provided opportunities for SCSCC clients to support the construction team. These initiatives strengthened community involvement and reinforced Degnan's values of collaboration and connection.

TYPE OF PROJECT

Rail

CLIENT

Transport for NSW

PROJECT COMPLETION

October 2021

PROJECT VALUE

\$18.5M

DELIVERY MODEL

Design & Construct